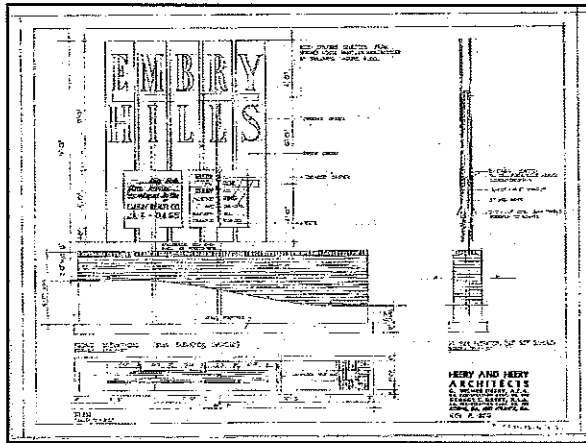


Embry Hills Neighborhood



An original drawing for the Embry Hills sign recently donated by Heery & Heery Architects

By Ben Zdenecanovic

Embry Hills is a planned community in Chamblee, northwest DeKalb County. The neighborhood is just southwest of I-85, bisected by I-285, and encircled by Henderson Mill Road, Chamblee-Tucker Road, and Northcrest Road. It includes: Alton Road, Embry Circle, David Road, Chase Road, and Embry Drive.

Embry Hills was among the first of many planned communities built following the Second World War in DeKalb County as the area saw a boom in industrial development. Chamblee in particular was home to a substantial increase in subdivision and suburban growth as industries such as Frito-Lay, Eastman Kodak, and General Electric moved plants and offices into the area. Workers from around Georgia and around the country flocked to the town's booming

industry, accounting for 120,000 new citizens between 1950 and 1960, or 42% of the area's total population expansion. Embry Hills is a direct consequence of this period of unprecedented growth.

The Embry Hills community was built in the 1950s by the Embry Realty Company, founded in the late 1940s by Jack Embry, a former sales manager with Adair Realty, and his brothers James, Neal, and Theo. Prior to the construction of Embry Hills, the company built a variety of residential homes in the East Lake, Decatur, and East Atlanta areas. Their first planned communities were the Belvedere and Columbia Valley subdivisions at the intersection of Memorial Drive and Columbia Drive in Decatur, built in 1951, as well as the adjacent Belvedere Shopping Center, home to the first suburban Rich's department store.

Around 1955, the company purchased three large tracts of land that would become Embry Hills from the Henderson, Chesnut, and Williams families -- 600 acres of farmland containing little more than six houses, a hog farm, and a sawmill. Construction began in late 1956 with Poe and King as land planners and engineers. Heery and Heery, an architecture firm that would go on to design such monumental Georgia structures as 999 Peachtree Street, the Georgia Dome, and Turner Field, were employed as architects and subdivision consultants. The area was designed to be mixed use, featuring not only houses and apartments,

Continued on page 4

Bond House Listed on Register

From Historic Preservation Division, DNR

The Bond Family House, located on Rock Chapel Road in Lithonia, was listed in the National Register last September. The property owner sponsored the nomination and prepared the materials.

The Bond House was constructed circa 1872 as the home of one of DeKalb County's leading citizens, Eason Jackson Bond (1834-1893), and remained in his family until 1985. The house is significant in social

history for its associations with the Bond family. Eason Bond was the son of an early DeKalb County pioneer who moved to the area circa 1834. Eason served as Chairman of the DeKalb County

Inside this issue

- 2009 Lecture Series, page 2
- Black History Month, page 3
- Volunteers Needed, page 3
- Membership Report, page 6

Continued on page 2

End of Year Contributions

Elizabeth & Frank Allan
 Frank & Betty Asbury
 Brad & Kay Bryant
 Lois Durling
 Dr. & Mrs. George Coletti
 Mark & Kathie Gannon
 Mr. & Mrs. Robert Gerwig
 Bill Funk & Gayle Gellerstadt
 Mr. & Mrs. Norman R. Harbaugh
 Mrs. Eloyse D. Hyatt
 Windsor Jordan
 John Keys
 L. L. Kitchens, Jr.
 H. T. Marshall
 Dr. & Mrs. Frank Matthews
 Mirium Mathura
 Jennifer Richardson
 Lora D. Pasco
 Sara Parsons
 Don Rawlins
 Jack Regan & Ginger Krawiec
 Tom & Lucia Sizemore
 Tim & Christa Sobon
 Perry Stephens
 Harry Stillwell
 Tom Stubbs
 Kenneth H. Thomas, Jr.
 Betty Willis
 Yerkes Research Center
 Stuart & Char Zola
 For the Archives:
 Joyce Cohrs
 Kenneth H. Thomas, Jr.
 Thank you for your
 generous contributions.

Embry Hills (cont.)

but office space, medical buildings, and retail. Most of the subdivision's 700 to 800 homes, as well as Stonecrest Apartments and several other apartment complexes, were constructed throughout 1957, with additional residential construction continuing into the early 1970s.

Homes sold rapidly, and Embry Hills became a thriving and fully developed community within only few years. The Embry Hills Club, established in 1958 at 3131 Alton Road, featured swimming and tennis facilities along with a clubhouse, where talent shows and other community gatherings were held. An active Embry Hills Garden Club, based on Alton Road, was founded by the early 1960s. Construction on the Embry Hills Shopping Center began in 1963; early businesses included a hardware store, drugstore, five-and-dime shop, laundromat, and the perennial Embry Hills Barber Shop. In 1961, the Embry Hills United Methodist Church, located on a 5.7 acre site on Henderson Mill Road, began worship service with six families in attendance. The Embry Hills Kindergarten was launched at the church in 1963 with 22 children in three classes. The Embry Hills branch of the DeKalb County Public Library system opened its doors to the public in 1990 on Chamblee-Tucker Road; it is currently closed for extensive renovation as part of the Library Bond Project and will be completed in October of 2009.

Although the neighborhood features several two-story homes, ranch and split-level ranch style homes are the most numerous in the Embry Hills area. Ranch homes, characterized by their simple, single story floor plan, low pitched roof, and long and narrow layout, were extremely popular at the time of Embry Hills' construction – during the 1950s they accounted for 9 out ten new houses. A variant on the traditional ranch style house, the split level ranch, is also common in the Embry Hills neighborhood. Split level ranches are marked by three or more stories, with the front door opening directly into the main living area, with bedrooms typically above the middle floor, and a garage and mudroom below.

The Embry Hills of today retains the characteristic charm that made the neighborhood so attractive 50 years ago. Comprised of middle class families, young professionals, and retirees (many of whom are original residents), the area boasts a low crime rate, an award winning neighborhood watch program, a variety of places of worship and many high quality schools. Embry Hills remains historically significant as a quintessential example of DeKalb's postwar suburban expansion. †

Tour of the Stone Mountain Cemetery

The Confederate Memorial Camp No. 1432, *Sons of Confederate Veterans*, recently conducted the first annual "Tour of the Stone Mountain Cemetery". Burials include 75 known veterans and 150 unknown Confederate soldiers. Most of the unknown soldiers died at three hospitals in Stone Mountain that were in service during the *Battle of Atlanta*. They were Johnson House, Stillwell House, and Sycamore Grill. The veterans were soldiers that returned to the area and took up residence in the city after the war.

Dr. George Coletti gave a brief history of Stone Mountain, followed by the tour conducted by camp members. The tour highlighted 20 veterans including Oliver Winningham, George Riley Wells, John Wilson McCurdy, E.N. Nash, and George Presley Trout.

One soldier was buried with his horse. If you did not join us this year join us next year to see who that veteran was and see for yourself the horse that was family. For those history lovers that did join us we will be discussing some different veterans next year.

If you are interested in The *Sons of Confederate Veterans*, who are descendants of Confederate soldiers please contact Jeff Bailey at jbailey858@aol.com. The SCV is a historical and non-political organization dedicated to historical preservation.

The Confederate Memorial Camp No. 1432 meets every month. Our next speaker will be Kelly Barrow, Commander, Army of the Tennessee. Other speakers and topics for 2009 are Dr. John Fowler, Kennesaw State University - "Port Hudson, Vicksburg Campaign", Debra Denard - Georgia Civil War Commission, and Gordon Ponsford - "Cemetery Restoration". †